



Qualitätssicherung. **Vom Erzeuger bis zur Ladentheke.**

Steps for becoming a Scheme Participant Logistics Companies

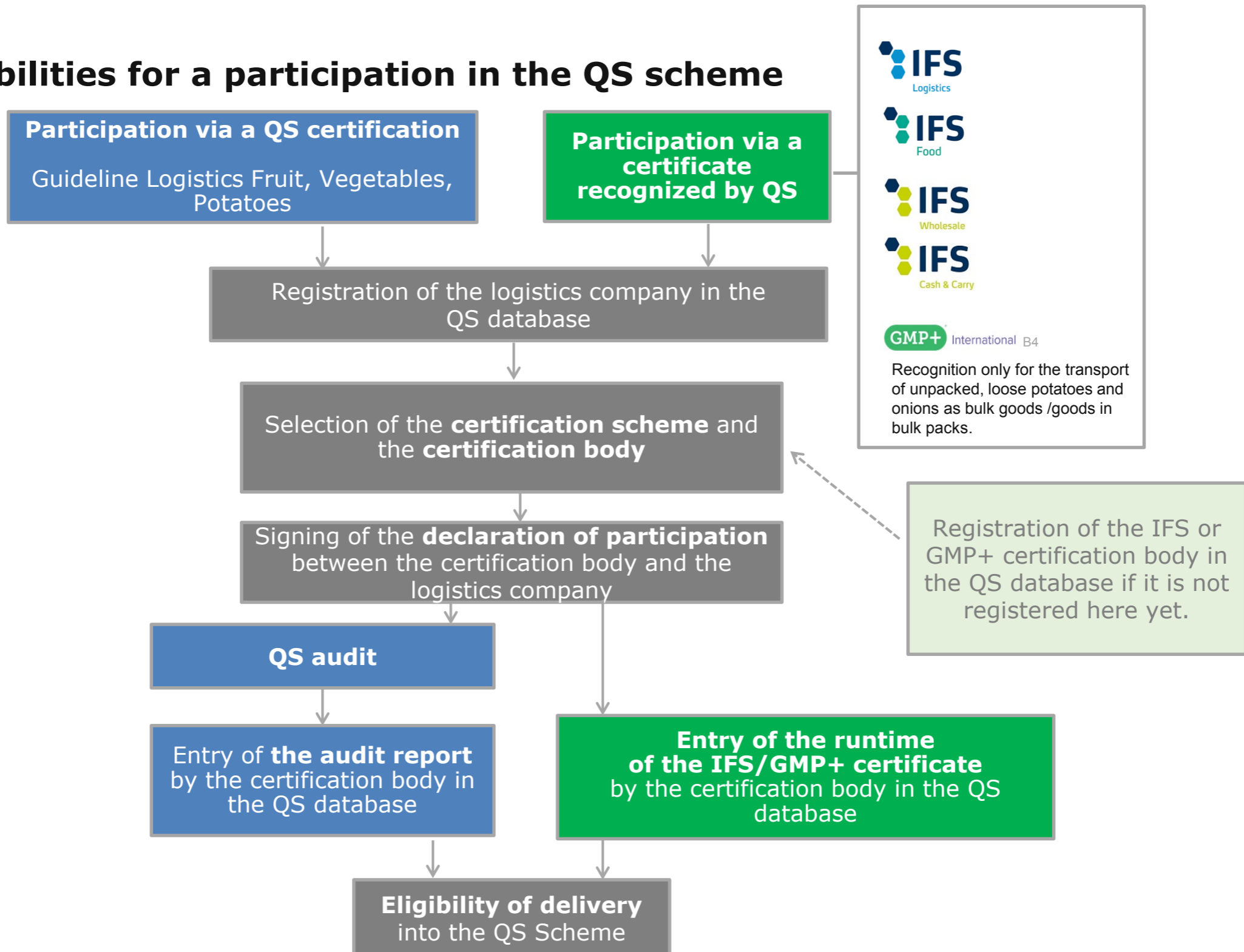


Steps for becoming a scheme participant for logistics companies

- Overview -



Possibilities for a participation in the QS scheme



Scope

Please note:

- The scope of the QS guideline Logistics Fruit, Vegetables, Potatoes guideline applies to all logistics companies that **exclusively transport**, and/or **store** and if necessary do the **order picking** of fresh, prepared and/or processed fruit, vegetables, potatoes **without becoming the owner of the products**.

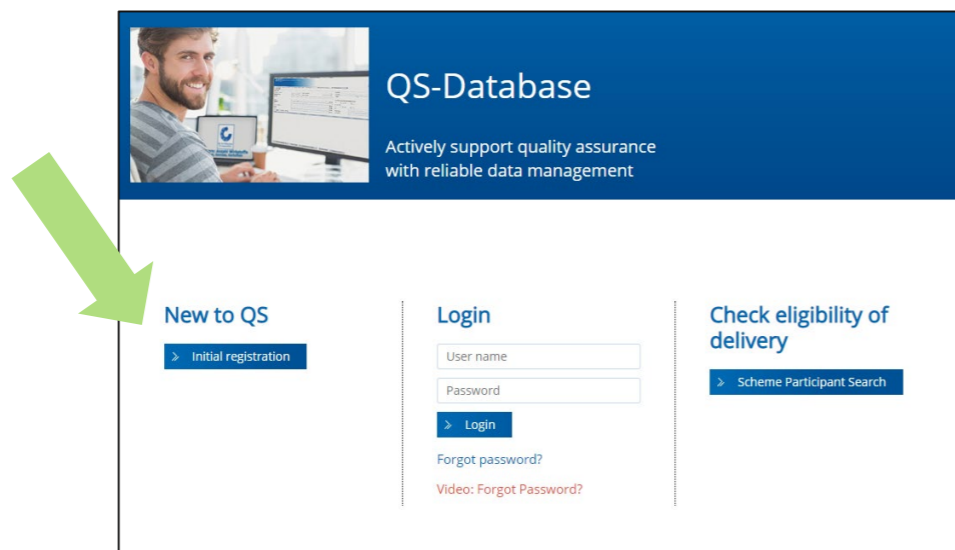
- For companies that **participate via a certificate recognized by QS for the logistics sector** this means:
 - QS goods may only be transported, stored and, if necessary, order picked.
 - The trading with QS goods or the further handling of QS goods (e.g. washing, packing) is not covered by the recognition.
 - Companies that wash or pack QS goods, for example, must have themselves certified according to the QS guideline Wholesale Fruit, Vegetables, Potatoes.

Steps for becoming a scheme participant for logistics companies



Registration in the QS database

- You can register your company at <https://www.qs.de/softwareplattform/en/>
- To start the registration procedure click on the button „Initial Registration“.
- You can choose whether you want to participate on basis of a QS certification or on basis of an IFS or GMP+ certificate.
- We recommend to clarify the conditions for a QS scheme participation in advance with the certification body.



Participate in the QS scheme

Join the QS scheme

- List of approved certification bodies
PDF, 371 KB
- QS for Logistic companies
PDF, 94 KB
- Steps to become a scheme participant - Logistics
PDF, 811 KB

In order to receive the delivery authorization for the QS System, your company must be certified according the QS guideline Logistics Fruit, Vegetables and Potatoes. Alternatively, participation can take via a certificate recognised by QS. This includes IFS Logistics, IFS Food and IFS Cash&Carry/Wholesale.

For the transport of unpacked, loose potatoes and onions as bulk goods or goods in bulk packs, the right to deliver into the QS system can also be obtained by a certification according to the QS guideline Feed Sector (production scope road transport) or certification according to GMP+ (scope road transport).

The participation via a recognized certificate takes place by the responsible certification body entering the runtime of the IFS or GMP+ certificate in the QS database.

Regardless of which certification system you want to use to participate in the QS system, you must register your company in the QS database and sign a declaration of participation with your certification body. Further information can be found in the document "[Steps to becoming a scheme participant - Logistics](#)".

[> QS database](#)


[> FAQs - Answers for wholesalers and logistics service providers](#)

Steps for becoming a scheme participant for logistics companies

Registration in the QS database

- After reading the information for initial registration and accepting the data privacy statement, click „next“ in order to start with the initial registration.
- In the first step, you select the stage at which you want to become a QS system participant:
→ Stage „Wholesale/Logistics fruits vegetables, potatoes“.
- Enter your company and contact data in the following steps 2 to 8..
- A detailed description for the initial registration can be taken from our website:
<https://www.q-s.de/qs-scheme/database-instructions.html>

Database instructions



Answers to questions that are frequently asked have been collected in the [FAQs](#). In the event of technical questions, please contact us: Your [points of contact](#).

On this page we offer detailed instructions with regard to the use of the database - step by step.

- [Initial registration](#) ▾
- [Read-only access to all the own data of farmers/ producers](#) ▾
- [For certification bodies/auditors](#) ▾
- [Master data \(scheme participants and coordinators\)](#) ▾
- [Residue monitoring \(scheme participants, coordinators, laboratories\)](#) ▾
- [Feed monitoring \(scheme participants, coordinators, laboratories\)](#) ▾
- [Antibiotics monitoring \(veterinarians and farmers\)](#) ▾

[Click here for instructions in Spanish.](#)

Steps for becoming a scheme participant for logistics companies



Registration in the QS database

Participation based on a QS logistics certification

- If you want to participate via a QS Logistics certification, choose the certification scheme "QS"
- Please select the production scope „84-Logistics Fruit, Vegetables, Potatoes“ when entering the location data.
- Please choose a certification body that organizes your participation and that performs the audit.
A list with QS approved certification bodies is available at <https://www.q-s.de/fruit-vegetables-potatoes/logistics.html>
- After a successful registration in the database you will receive a confirmation mail from QS.


Steps for becoming a scheme participant for logistics companies



Registration in the QS database

Participation based on an IFS or GMP+ certification

- If you want to participate via your IFS certificate (Logistics, Food, Cash&Carry/ Wholesale) or GMP+ certificate (scope road transport), choose the according certification scheme. You will then be asked to enter the registration number of your certificate.

Certification scheme 

Certification schemes	
Name	
>	DKHV
>	GMP+ (Transport Kartoffeln, Zwiebeln)
>	IFS CashCarry/Wholesale
>	IFS Food
>	IFS Logistics
>	QS

- Afterwards you will be asked to select your IFS/GMP+ certification body.
- If the certification body is not yet registered in the QS database, it must first contact QS.
- After a successful registration in the database you will receive a confirmation mail from QS.

Approval for the QS scheme

Participation via a QS certification according to the guideline logistics

- The chosen certification body will be informed automatically about your registration and will contact you. But if you prefer you can contact them first.
- Together you will plan the audit in your company.
- Your certification body will send you a declaration of participation, which has to be signed and send back by you.
- The certification body performs the audit on an agreed date and enters the results (audit report) in the QS database.
- After that you will get the eligibility for deliveries into the QS scheme and your company appears in the public search of QS.

Participation via an IFS/GMP+ certification

- The chosen certification body will be informed automatically about your registration and will contact you. But if you prefer you can contact them first.
- Your certification body will send you a declaration of participation, which has to be signed and send back by you.
- The certification body enters the certificate runtime of the IFS/GMP+ certificate in the QS database.
- Finally you will get the eligibility of delivery into the QS scheme and your company appears in the public search of QS.

Qualitätssicherung. **Vom Landwirt bis zur Ladentheke.**

Strong Partners.

Hand in hand for safe food.

